

# DEEPER DIVE

Training on the LifeCourse Framework

VOL. 1, ISSUE 1

10.2020

## THE BUZZ ON THE LIFECOURSE FRAMEWORK

**MEET YOUR  
TRAINERS  
&  
INSTRUCTORS**



**DEEPER DIVE** is an informative training of the LifeCourse Framework to include building blocks to think differently about what it means to support individuals with disabilities and their families; providing tools for planning and having conversations for a good life and how to achieve it; and real life examples showing the planning, practice and policy of LifeCourse in action. We want to recognize the vast potential within our students and to help them see it within themselves. We want to support them in reaching that potential. All our students have the right to live, love, work, play and pursue their life aspirations in their community.

**JOIN US NOVEMBER 19th 2020 4:00pm - 6:00pm Deeper Dive Introductory Training to the SUMMER 2021 Face-to-Face Opportunity**

Register in advance for this training:

<https://us02web.zoom.us/meeting/register/tZlvceCsqjooE9AkMxK4sdbVloBfEbl6wZv>

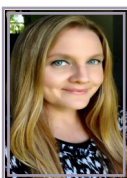
### MEET YOUR TRAINERS



Meet Kelly Arnold. She is the employment lead and supporting families/Charting the LifeCourse co-lead with the Pennsylvania Office of Developmental Programs (ODP) Central Region office. She began her career with the Pennsylvania Department of Human Services (DHS) in July 2015 as part of the Human Services Program Trainee (HSPT) Program, where she rotated to three different program offices within DHS: The Office of Medical Assistance Programs (OMPAP), Office of Developmental Programs (ODP), and Office of Child Development and Early Learning (OCDEL). She began working at ODP full time in May 2016 as the employment lead for the bureau of state operated facilities, and then as the ODP statewide employment lead in the bureau of policy and quality management from July 2017 through February 2019. Kelly has presented at several conferences, webinars and trainings throughout Pennsylvania on the topic of Employment First as well as Charting the LifeCourse during her time as ODP's statewide lead, as well as in her current position with ODP's Central Region.



Meet Candida Walton. She is the Supporting Families Statewide Initiative Coordinator for the Office of Developmental Programs for the Commonwealth of PA. As the Coordinator, she serves as the facilitator for the state in connection with the National Community of Practice for Supporting Families. The strategies of the Initiative are organized within Recommendation #4: Support Families throughout the Lifespan from the Information Sharing Advisory Committee (ISAC) and methods embed the foundational principles of Charting the LifeCourse. You can reach her at [cawalton@pa.gov](mailto:cawalton@pa.gov).



Meet Cortney McCaleb. She is a Supervisor and the Supporting Families/Charting the LifeCourse co-lead with the Pennsylvania Department of Human Services (DHS) Office of Developmental Programs (ODP) Bureau of Community Service (BCS) Central Region office. Cortney began her state service career with DHS in August 2005 as part of the Human Services Program Associate Trainee (HSPAT) Program, where she was immediately assigned to work in the ODP-BCS-Central Region Office. In August 2006, Cortney was promoted to a Program Specialist and subsequently, in March 2008, was promoted to a Program Representative within the ODP-BCS-Central Region Office. In June 2013, Cortney was promoted to a Program Supervisor within the ODP-BCS-Central Region Office, a role she continues at present. During her 15 years with the ODP-BCS-Central Region Office, Cortney has served in a number of lead roles in topic areas such as waivers/service definitions, Supports Intensity Scale/Pennsylvania supplement, participant-directed services, quality management, provider applicant orientation, provider qualification, provider monitoring, Support Coordination Organizations, individual support plan and outcome development, regulations and has been part of many workgroups and teams. Cortney has supported in the development of ODP content and presentation at conferences, webinars, and trainings throughout Central Pennsylvania.

### INTEGRATED SUPPORTS STAR

The origin of the integrated Supports Star as presented by charting the LIFECOURSE NEXUS.

<https://youtu.be/ubRIPqUi4Ag>

### EVERYDAY LIVES

We value what is important to people with disabilities and their families, who are striving for an everyday life. An everyday life is about opportunities, relationships, rights, and responsibilities. It is about being a member of the community, having a valued role, making a contribution to society, and having one's rights as a citizen fully respected. It is a vision that we should all be working toward together.

People with disabilities have a right to an everyday life; a life that is no different than that of all other citizens. This continues to be the truest statement on which we can build our work.

SPONSORED BY:

QUESTIONS: [hmjemployment@gmail.com](mailto:hmjemployment@gmail.com)

